

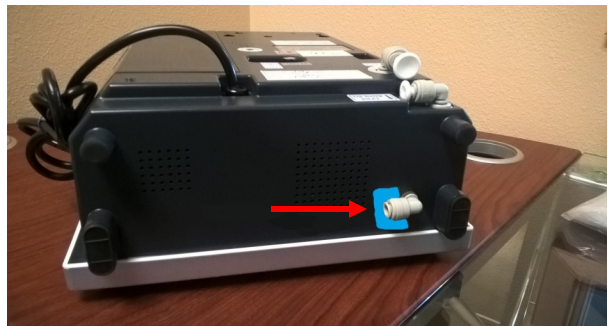
# Attention!

## The enclosed Flow Restrictor Assembly should be installed!

When Re-installing your ionizer, it will be necessary to also install the enclosed Flow Restrictor Assembly at the Tap Water inlet. Please refer to the following photos for proper installation.



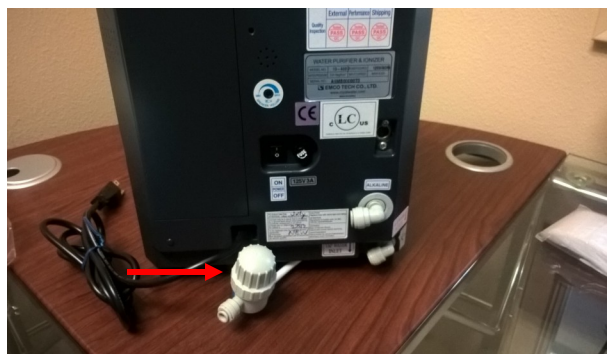
Step 1- Locate Flow Restrictor Assembly tubing with Blue tape.



Step 2- Insert tubing into port with blue tape, located on the bottom of the Delphi ionizer



Step 3- Make sure the tubing is fully inserted to port. Your ionizer should now look like this.



Step 4- Set your ionizer onto it's feet, be careful to position the Flow Restrictor Assembly towards the back of the unit. Connect the Cold water line to open port of the Flow Restrictor Assembly